

WELCOME TO GUI CDRWSEL



A GUI to RSJ command line mode

Table of contents :

- P1 - Prerequisites
- P2 - CDRWSEL installation
- P3 - CDRWSEL Start parameters
- 1 - Main Window
- 2 - Make CD from ISO file
- 3 - Customization/option window
- 4 - How to finalize
- 5 - Recorder
- 6 - Define ini parameters
- 7 - Special attach message
- 8 - Initial run - step by step
- 9 - Tips
- 10 - Change Log
- A - Author comments

WELCOME TO GUI CDRWSEL

P1/ Prerequisites :

Great RSJ V4 or higher from (<http://www.rsj.de>)
(probably it works with V3 too but I didn't test it. Of course, you can try it)

REXXUTIL (standard OS/2 - eCS DLLs)

➤ I strongly recommend the use of **DANI's** drivers

Kill.exe from <http://hobbes.nmsu.edu>

Trk2iso from <http://hobbes.nmsu.edu> if you would like use this option

RAMFS drive can be used for temporary file "SET TMP=" under config.sys
(If you would like use it, download it from hobbes "RAMFS110" or higher)

P2/ CDRWSEL installation :

Run INSCDRW.cmd to create object on the desktop

Run INSCDRW1 if you are under eCS1.x

(It should be run from install directory)

WELCOME TO GUI CDRWSEL

P3/ CDRWSEL Start parameters :

```
CDRWSEL -i -s -u -vol -cdani
```

- i - No more needed. Always uses INI file now
- s or -q (-s) - Activate Speed selection or (-q) use quiet mode
(-s) the parameter can be overwritten by INI file
- u or -t (-u) - Use only Upper case characters into help viewer
(-t) enable task list option.
- vol - Display the volume label in a "popup" (if available). Dropping focus will close the "popup" window.
- cdani - Use old "Refresh" process
- l - (L) Enable small debug mode (produces a cdrwsel.log file at close time)
- cpuspeed - removed since V2.13.0

Exemple:

```
CDRWSEL -i -q -t -vol
! ! ! !
! ! ! +--> Show volume name of inserted CD if available
! ! +-----> Enable in "task list" option
! +-----> Use quiet mode
+-----> Use ini file
```

```
CDRWSEL /i /q /t (This syntax is correct too)
```

Note:

When the program is first run and the cdrwsel.dat file doesn't exist, the New Drive List is run after answer to missing file message. Respond "save" to the first opened window before changing or updating drive list

WELCOME TO GUI CDRWSEL

1 / Main Appl Window :

Appl Window *style* is selected through "*define ini parameters*" window

V1 Window:



RSJ "drives" - Title may change according to language selection [CONTAINER]
 Enter or click twice on the drive to change from
 [Free to Attached],
 [Attached to finalize],
 start [CD_view] (see mode) or [restore CD_view].

Icons Color:

Green=Free, **Yellow**=Running, **Red**=Attached, **Black**=Error,
Orange=Free CD-ROM, **Blue**=CDView

mode	- Change from "Attach" to "View" or reverse	[PUSHBUTTON]
Sessions	- Select the number of existing sessions to skip 0 (default) or 1 to a max (cdrsel) 15	[SPINBUTTON]
Settings	- Access to defined drive list dialog	[PUSHBUTTON]
Status	- Gives the result of chkdsk /v of [?:] (available space on cd - number of sessions...)	[PUSHBUTTON]
Run	- Run personal program	[PUSHBUTTON]
Help	- Direct Help access	[PUSHBUTTON]

(RMB) popup options (will change when on path, CDROM or attached CDRW):

trkcopy (beta)	- Copy all tracks (paths, cd-rom, video) to a place you'll have to specify . Data tracks, audio tracks, video tracks. None of them are finalized . DAO copy cd to cd (select speed + finalized + eject CD) . Specified destination can be Free CDRW or full HD/fullpath
trk2iso	- Opens one OS/2 window per file which is in the path "Free state"
Iso2CD	- Open Iso2CD dialog window (nice option)
CDboot	- Calls cdboot (PM) for the drives "Attached state"
Cdcopy	- Disabled (will be available in the feature)
Eject	- Option available on CD-ROM only

Note : This window supports Color and Font drag and drop (a few limitations only)

WELCOME TO GUI CDRWSEL

Bar:



X	- Exit program	[PUSHBUTTON]
S	- same as Primary menu	[PUSHBUTTON]
i	- same as primary menu	[PUSHBUTTON]
A	- CD_Attach	[PUSHBUTTON]
V	- CD_View	[PUSHBUTTON]
F	- Direct access to finalize options	[PUSHBUTTON]
R	- Run personnal program	[PUSHBUTTON]
H	- Direct Help access	[PUSHBUTTON]

Note : Background, A and V buttons use same colors as under "V1 Window"

WELCOME TO GUI CDRWSEL

Window:



CD:	- this field is empty at first run time	[SPINBUTTON]
Drive:	- Drive letter to be used with the attached CDRW	[SPINBUTTON]
Sessions:	- Select the number of existing sessions to skip	[SPINBUTTON]
Attach	- Perform cdattach using previous parameters	[PUSHBUTTON]
View	- Start CDView using CDR/W parameters	[PUSHBUTTON]
Finalize	- Direct access to finalize options	[PUSHBUTTON]
Status	- Information on CD	[PUSHBUTTON]
Settings	- Access to define drive list dialog	[PUSHBUTTON]
Run	- Run personnal program	[PUSHBUTTON]
Help	- Direct help access	[PUSHBUTTON]

J Window:



CD:	- this field is empty at first run time	[SPINBUTTON]
Drive:	- Drive letter to be used with the attached CDRW	[SPINBUTTON]
Sessions:	- Select the number of existing sessions to skip	[SPINBUTTON]
Attach	- Perform cdattach using previous parameters	[PUSHBUTTON]
View	- Start CDView using CDR/W parameters	[PUSHBUTTON]
Finalize	- Direct access to finalize options	[PUSHBUTTON]
Status	- Information on CD	[PUSHBUTTON]
Settings	- Access to define drive list dialog	[PUSHBUTTON]
Run	- Run personnal program	[PUSHBUTTON]
Help	- Direct help access	[PUSHBUTTON]
Speed	- Change current speed stting only	[PUSHBUTTON]

(RMB) on any background window style opens the same popup menu. You can reset fonts and colors or reset the in-use drive list if "attach" remains disabled for a drive letter.

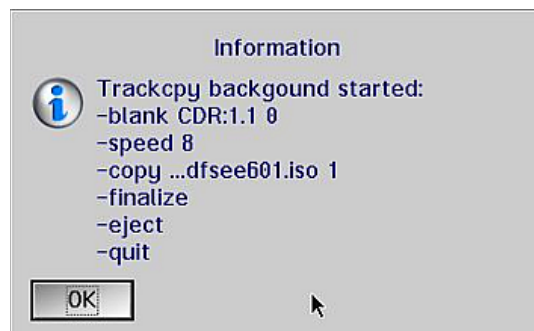
WELCOME TO GUI CDRWSEL

3 / Make CD from ISO files:

- a. Use "V1 Window" style
- b. Add full path name where all *.iso files are under Vpaths (do it one time only)
- c. Under "V1 window", change mode to CD_view
- d. RMB on the HD path name where *.iso files are
- e. Select Iso2CD from the popup window



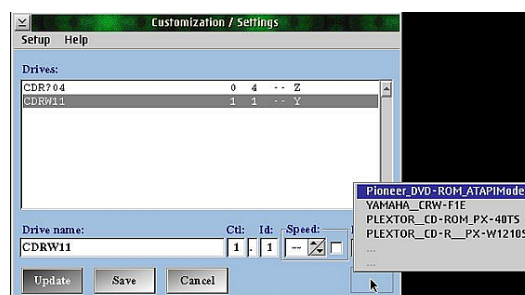
- Select the *.iso file to work with (Source:)
- Select the burner (Target:)
- Select "Blank CD" for CD-RW if needed
- Select "Eject CD" at end of process
- Select if speed has to changed or not
- Select the correct speed to use
- Be sure to have a CD in the burner and drive door is closed



Type of message issued after you press the "Run" button. You'll find all step which are going to be processed according to your request. As you can see, the process runs in background as "detach mode". The time to finish is file size and speed dependant.

WELCOME TO GUI CDRWSEL

3 / Customization/Settings : (Select [settings] or [s] on main window)



"Refresh" : If names aren't resolved, click RMB on the square to open a popup window and select the right name.

Drives

- All defined drives [LISTBOX]
- 1/ Click once to change DRIVE name (entry fields)
- 2/ Click twice to delete unwanted DRIVE from list (will be kept for Vpath)
- 3/ Manually enter a new drive into entry fields

Note:

You'll be prompted to save the new drive list at CDRWSEL close.
Value of CTL + ID is checked to determine if the input is a new entry or should overwrite the selected drive.

Drive name

- A generic name for the drive to use

ctl

- Adapter number (could be found under Hardware Manager)

id

- Drive position (IDE) or SCSI ID

Speed

- Change current drive speed and new default for next use
[x] click on check box to force use of speed parameter

update (Ok)

- Update and put last in list the selected line with new values

Drive

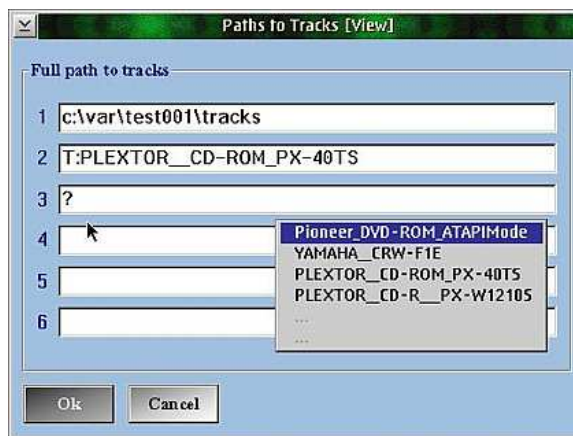
- Assign a drive letter to a device (option enabled with "V1 Window" style)



WELCOME TO GUI CDRWSEL

Setup

- Access to
 - Define ini parameters (Customizable INI file)
 - Recorder (check "Run RSJ Daemon" to have this option enable)
 - View (ini)
 - Task list (with added parameter : '-t')
 - Run RSJ Daemon
 - Single burner (Usable if less than 2 drives in list)
(Use this option when only 1 physical burner is installed and **normal attach doesn't work**)
 - Drive list
 - 1) Refresh (drive list with drive names found)
 - 2) Deep refresh (* checks each adapter position and tries to resolve driver name. If drive name couldn't be found, a generic name is used)
 - Vpaths (define paths to tracks files - max=6)



- * To specify an audio CD in a CD-ROM, ignore the first "\" and the text following "drive_letter:" is used as comment and drive is supposed CD-ROM: S:PIONEER_DvD-ROM (see V1_Window screenshot)
(? opens a popup menu with the list of removed drives from "refresh list")
- * Blanks in path name are not supported (program will change them into "_").
- * If a path doesn't exist, it is created (can create more than one level)
- * **RECORDER (reserved uppercase value) in input field can be usefull to have [CDVIEW CDR:] for CD creation from iso files .**

- Exit

- * (deep scan) - Does an auto detection of eligible CDRW for RSJ
it clears existing list and adds new detected DRIVES (if drive name isn't resolved):
 - 1/ CDRWxy (Drive is ready ctl=x, id=y)
 - 2/ CDR?xy (Drive not ready flag received e.g. no CD in the burner)
 - 3/ CDR*xy (Drive in use. Z: is already in use)

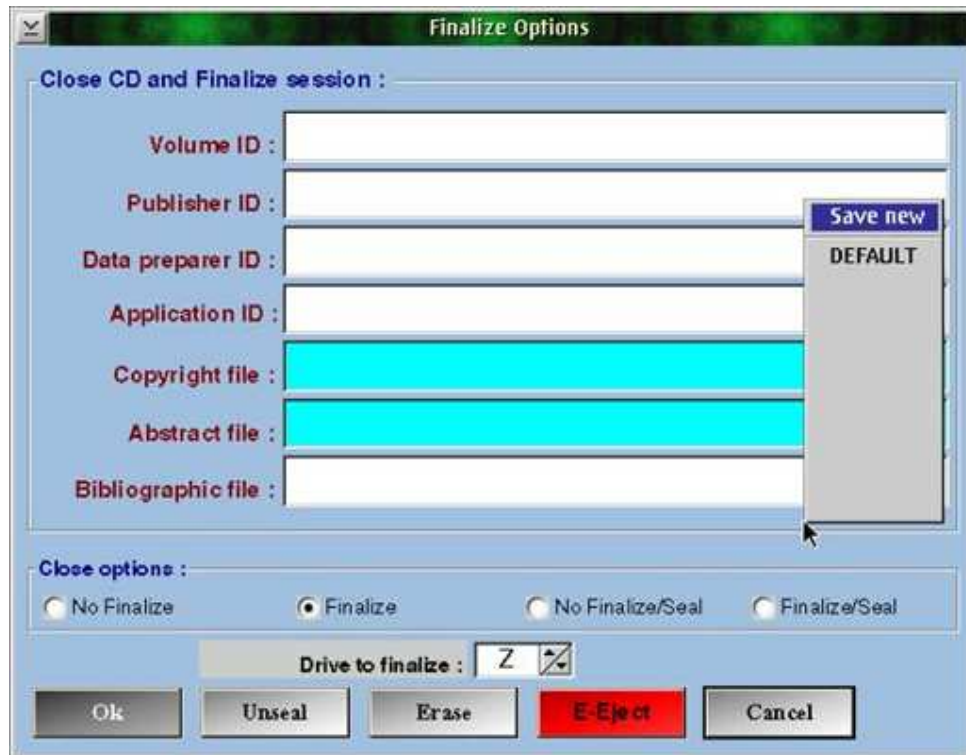
HELP

- Access to
 - How to : Read file cdrwsel.doc
 - ? : My tool version.release.modification

Note : If drive list has changed without saving, you'll be prompted to save it at exit

WELCOME TO GUI CDRWSEL

4 / How to finalize ? (Select [Finalize] or [F]. Under V1 window, click on [attached] drive)



Click on Finalize button from app Windows followed by :

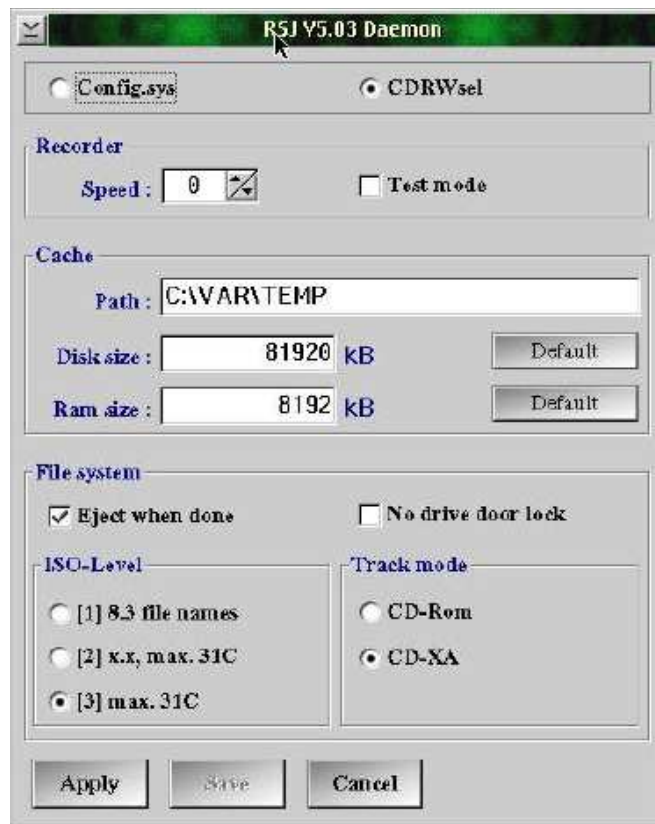
- a/ No finalize = Close CD only
- b/ Finalize = Close CD and finalize
- c/ No Finalize/Seal = Close & Seal CD
- d/ Finalize/Seal = Close and finalize & seal CD
- e/ Emergency eject = Flush buffers and eject the CD
- f/ Add complementary comments (only validated with b/ and c/)
 - e.g. Copyright, Author ...
- g/ Unseal (remove seal protection if CD was written by RSJ)
- h/ Erase RW media only

RMB click on bottom or top border of "Close CD and finalize sessions :" opens a popup window. You can save or restore general updates from entry fields (see the cursor position on the picture). A "?" in the "Volume :" entry field does the same.

- * After selecting save, give a title to your new profile (uses to update the popup window list)
 - e.g. - DEFAULT (for general comments)
 - CDRWSEL (for my backup of CDRWSEL)
- * The list allows 10 entries.

WELCOME TO GUI CDRWSEL

5 / Recorder: (Select [Settings] + [Setup] + enable [Run RSJ Daemon] + [Recorder])

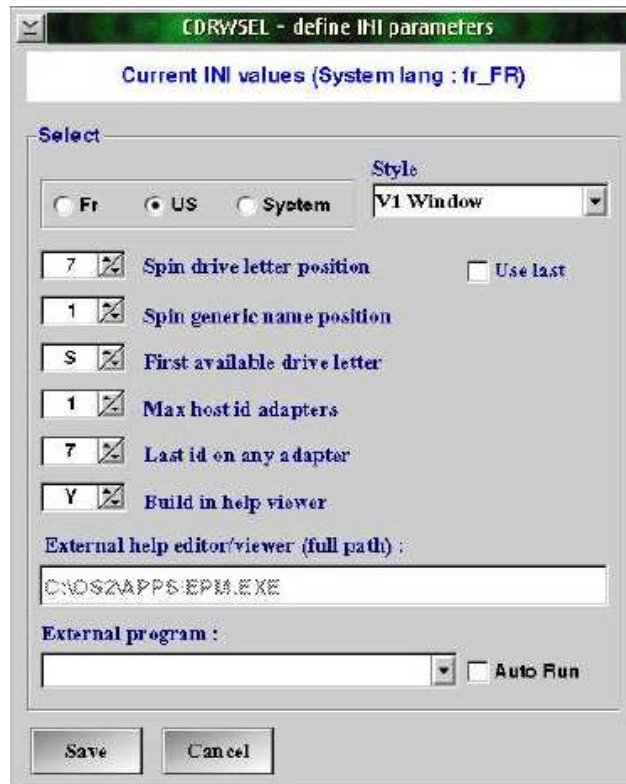


* The RSJ version is displayed in the window title.

- config.sys (select this option if you want to change CDWFSD defaults in config.sys. Changes effected at next reboot)
- CDRWsel (select this option to load/change CDWFSD parameters for all new attach processes - Detach all drives before using dynamic CDWFSD replacement)
- Other options are same as under RSJ CD Writer control

WELCOME TO GUI CDRWSEL

6 / Define ini parameters : (Select [Settings] + [Setup] + [Define ini parameters])



* Click on save to create or update cdrwsel.ini file

Language selection :

- Select your language FR / US / SYSTEM (set_lang= from config.sys)

App Window style :

- Select your app style window from the drop down list

Spin drive letter position :

- Select the default drive letter to use for cdattach
- Use 1 for Z, 2 for Y, 3 for X and so on (don't use below range)

Spin generic name position:(*)

- Select the Drive name mostly used (= line number into the list)

(*) USE last :

- Click on this option to use closing values instead of previous defined values

First available drive letter :

- Define lowest drive letter available for Attach
- Range goes from Z to the letter you assign

Max Host id adapters :

- Specify highest available ctlid (example for 0 and 1 follow):
- 0 - for the first IDE controller
- 1 - for the second IDE controller
- Value may go above 3 if DANI's IDE to SCSI mapping is used.

WELCOME TO GUI CDRWSEL

Last id on any adapter :

- Specify highest IDE / SCSI id available for auto-detection
- will save time at auto-detection time (1 is good for IDE)

Build-in help viewer :

- Specify "Y" to use internal viewer, "N" for any user preference

External help editor/viewer :

- only with previous option = "N"
- specify full program path to use e.g. c:\os2\apps\epm.exe

External program :

- Drop the list down and **click on -new-** to create a new entry
- Clicking on an existing entry will prompt whether to delete it ?

Auto Run :

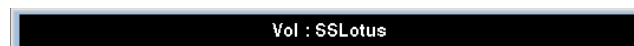
- Start the selected program at CDRWSEL startup

7 / Special attach message : (Appears if attached CD/DvD isn't blank)

Attaching a non-blank CD results in displaying the number of sessions, whether CD is data or audio and total used on CD.



Choose one of the options. select "continue" to work with this attached CD.

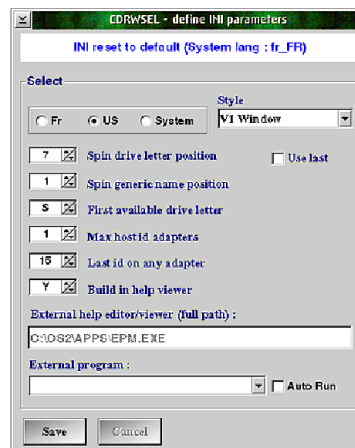


If a volume name exist and "-vol" parameter was specified, following popup is displayed with previous window until this one loses focus.

WELCOME TO GUI CDRWSEL

8 / Initial Run - step by step :

- RSJ must be installed
- Unzip cdrwsel zip package into a temporary path
- Run inscdrw1.cmd to installed cdrwsel, following eCS rules
- Click on cdrwsel icon to start it
- Initial cdrwsel window :



Select Window style,
Click on save

- Settings window now appears :



Click on save

Always try "Refresh" first. According to your daniatapi.flr configuration, it may switch to "Deep refresh" and update the not_burner_list if name resolution fails (generic name are used). If ctl.id in the "refresh" list (information from rmview) aren't correct, run "deep refresh" (change names from the bottom line if needed).

- Restart CDRWSsel
- From the main window, you can select settings to change the drive list (don't forget to save the list after you change it). You can select **Setup** and :
 - Initialize to change window style (bar - window - V1 window - J window).
 - Click on Run RSJ Daemon if CDWFSD is commented in your config.sys file. This will enable Recorder option too.
 - Once Recorder is enabled, you can change CDWFSD settings
 - Add or Update Vpaths list with CDROM drives and or tracks path on your hard disk

9 / Tips :

Starting CDRWSEL without RSJ installed: add "SET CDRWSEL_BP=CDWFS.IFS"

Error at startup :

Check that under "set path=" or "set dpath=" has the root in it where config.sys is.

Check that under "set tmp=", the path doesn't include ANY spaces.

Check that RSJ daemon was added into config.sys as "run=" with or without "REM"

Delete older CDRWsel.INI under your user_ini path.

If pre-V2.13.2 release had a correct drive list with the "refresh" option, you can add parameter -cdani (cdrwsel -cdani) to process "refresh" as under v2.13.1

RC20 during attach :

Check that the ctl and id numbers are correct. Normal drive list refresh can have incorrect values depending on your hardware configuration and driver loading sequence under your config.sys. If this is the case, change max ctl number to a higher value and run refresh (deep scan) with a CD inserted into the drives. Ready burners have a generic name starting with 'CDRW'. Use the found ctl.id to correct the normal refresh list

- If the drive was added under CDDRV.INF, check for correct syntax.
- To check RSJ attach command, run following command in an OS/2 window :
cdattach z: -d CDR:x.y (x= ctl_number , y=id_number - the dot can be changed to ',')
- If You only have one burner on your system, try to use 'Single burner' option under setup

RMB Click is available under "V1 Window" only. Right-click on background !!

Attach or View failed :

Change the separator between ctl and id from "." to ",". May attach unpredictable drive under specific configuration (be carefull and do several tests).

For any other problem:

Take screenshots of the failure and explain what you were doing when the problem arose.

Take "view ini" screenshot and copy of config.sys and put both in a zipfile.

Start CDRWSEL with the flag -L (cdrwsel -l) and create the problem. At CDRWSEL close, file cdrwsel.log is created (usually under temp path). Add this file in the global zip file.

Send an email and specify "CDRWSEL usage problem" as subject and zipfile as an attachment.

Hardware Manager :

- a/ Open system setup folder (should be on the WarpCenter)
- b/ Open Hardware Manager
 - * You should know under which DMA_CTLR you attached your CDRW
Mainboard manufacturer recommendation is : 0 for disk, 1 for others
 - * Before your CDR, you'll find
ATAPI_0 - Use 0 as id
ATAPI_1 - Use 1 as id
 - * For SCSI CDR (here is a exemple)
CDROM_(3,0)
| |
| +---> lun = 0 (this isn't the Ctl value)
+-----> id = 3

Part of my config.sys file (changes only drives needed to worm drive)

BASEDEV=DANIATAPI.FLT /!SCSI

(Special caution if the flag **/RSJ** is used . Set option to only use one driver to map IDE to SCSI. If you use **/RSJ** on one unit, try to use **/!SCSI** on others) Read Dani's doc.

...

REM *** 2x HD - 1x DvD - 1x CDRW / UDMA enabled for all drives /80WIRE because it
REM wasn't correctly detected - My IDE S-ATA works ok with default value ***
BASEDEV=DANIS506.ADD /A:0 /BM /80WIRE /A:1 /BM /80WIRE

...

REM *** S0=IDE_DvD S1=IDE_CDRW S2=SCSI_CDR S3=SCSI_CDRW ***

BASEDEV=OS2ASPI.DMD **/ALL** << If OS2ASPI is used, add /ALL

BASEDEV=LOCKCDR.FLT **-S0 -S2** << Remove not used drivers

DEVICE=C:\CFS\RSJSCSI.SYS

IFS=C:\CFS\CDWFS.IFS

RUN=C:\CFS\CDWFS.D.EXE -p "C:/CDWFS/disk_cache" -c49152 -b8192 -t2 -i3 -smax

...

If CDRWsel attach or view is not working, try previous '**red**' recommendations first (was reported by user). IDE to SCSI drive mapping may affect different ctl.id to your devices than those really are. Now, "Refresh" updates the not_burner_list and switches to "Deep refresh" if /RSJ is used or /!SCSI is missing. The not_burner_list will be usefull to replace generic names if name resolution failed.

10 / Change log :

Thanks to Alan Townsend (Canada), Erik, Kevin, Tom, Mike and all "Anonymous" and a special thank to Bernd for their good suggestions and tests resulting in an improved CDRWSEL for all (exe and docs)

* New V2.14.0

- 1/ When you run "refresh", you could see that the list is updated with CD-ROM, DvD-rom and burners. Now, each deleted device from the list (which aren't burner) are saved in a not_burner list for futur use.
- 2/ "Refresh" procedure has changed. It removes the need of "SCSI on second PCI bus" option. If /!SCSI isn't used or /RSJ is on daniatapi driver (cdrecord compatibility), process switches to "Deep refresh" during normal "Refresh" and updates a device_list used during "Deep refresh". (**Big change to improve ctl.id & names in the drive list**)
- 3/ CDRWSEL INI file has a new key : CD_dvd (deleted devices from the drive list)
- 4/ "?" can be used in the Vpaths window to open a popup window with deleted device list (1) or resulting from "Refresh" switch process. Click on a device and the line is updated but you have to change the drive letter to the correct value.
Defining one Vpaths entry as RECORDER (upercase) allows to open a [CDVIEW CDR:]
- 5/ "?" in "Volume ID:" or RMB on frame border opens a popup window to save or restore a current finalize comments. Up to 10 profiles can be saved.
- 6/ When you are in "View" mode with added cd-rom. Select a "free" cd-rom and click RMB to open a popup menu. If you select trkcopy + DAO, a new popup window allows you to chose writing speed (1x to 12x). Than specify the target CD-RW (If the CD-RW is in your "V1 window" list, just give the right drive letter and it will find it (ex : Z))
- 7/ A new popup menu can be opened with a RMB click on each background window.
 - under each Window style, it allows to reset "reset fonts & colors" and "used drive letter list" (updated each time you do an attach but can disable drive letter if you didn't close de CD from CDRWSEL).
- 8/ Short help popup message are available on several part of several window (RMB)
- 9/ Create CD from ISO files (RMB on the HD path ("V1 window") where iso files are and select Iso2CD.
- A/ Emergency Eject (big button) has now a normal size and is aligned with other buttons.
- B/ With cdrwsel.cmd in the same directory as cdrwsel enables automatic cdrwsel restart after window style change.
- C/ Added a small "trace debug" option enabled with -l parameters (output=cdrwsel.log)
- D/ A few bugs corrected
 - * User program list not correctly saved under "Define ini parameters" window
 - * Old "Refresh" procedure gives wrong results in complex configuration or with cdrecord
 - * Changed a few text field
 - * Corrected a few more minor bugs.

WELCOME TO GUI CDRWSEL

* New V2.13.1

- 1/ Program path name accepts any valid path name 'with or without blanks'. Temp path names under TMP variable [set TMP= ...] must not contain blank characters.
- 2/ "V1 Window", once a device is selected, remains selected until you decide to change the drive (wasn't the case before !)
- 3/ All *.bmp files are no more needed. Bmps are taken from the DLL now
- 4/ If "Error" occurs at attach, icon changes immediatly + message and returns immediatly to free after answering the message. It is faster and a new selection can be done quickly
- 5/ You can add up to 6 paths or CD-ROM with tracks (Vpaths option) and they are selectable from "View". New Icon was added for HD or CD-ROM tracks.
- 6/ trkcopy allows you to do a full copy of tracks to a different location.
- 7/ If trk2iso is installed, call it with RMB (V1 window) when on a **CD_view path**
- 8/ You can call PM cdboot from RMB (V1 Window) when **CD is attached**
- 9/ "Window" and "J-Window" support limited drag and drop color (Status & Finalize have same color). "Bar" doesn't support drag and drop color but background, A and V buttons have same color as under any other window.
- 10/ If config.sys isn't found at cdrwsel start, a message is now displayed instead of a crash.

* New V2.12.6

- 1/ Corrected a drag/drop problem under "V1 Window".
- 2/ "Mode" button accepts drag and drop color now (click on the button each time you change button color.

* New V2.12.5

- 1/ Corrected a bug found with temporary files on RAMFS drive (RAMFS110 used)
- 2/ Corrected a minor problem which could appear when (deep scan) run
- 3/ Parameters no more positionnal (e.g. -i -s 2000 or 2000 -i -s or -s 2000 -i ...)
- 4/ Parameters can be specified with a '-' or '/' e.g. **-i** is same as **/i**
- 5/ "V1 Window" Mode button now has a blue color for "CD_View" mode like the icon.

* New V2.12.4

- 1/ Removed limitation on available driveletter (range now made available)

* New V2.12.0 -> V2.12.3

- 1/ Changed "V1 Window" to a new "V1 Window" which is simplified, and "enter" on the selected drive is enough to attach or finalize the CD....
- 2/ Modified settings window (new spin button : define drive letter to burner)
 - * This option is enabled if "V1 Window" style is selected *
- 3/ Corrected enable/disable speed button depending if speed used

WELCOME TO GUI CDRWSEL

* New V2.11.0

- 1/ Attach button is disabled if the drive number is in use
- 2/ Added 'Recorder' setup (enabled if 'Run RSJ daemon' set)
 - . Allows changing CDWFSF Daemon parameters without reboot
 - . Allows changing CDWFSF parameters under config.sys
- 3/ Added 'Single burner' option: used if your system has only one burner and normal 'attach' doesn't work (e.g. config problem)
- 4/ Use of a kill thread program (from hobbes)
- 5/ Changed INI and temp files location according eCS1.1 rules
(add SET USER_INI= , SET TMP= into config.sys if missing)
SET PROGRAMS= is used by INSCDRW2.CMD install program only

* New V2.10.1

Forgot to activate the possibility of manually adding a new drive into the List (stupid error)
:(. Now corrected (ctl + id are checked to determine if the entry field should replace the selected drive or add it into the list)

* NEW V2.10.0 (Many changes, updated design...)

- 1 / INI file is now a real INI file (binary)
- 2 / DAT FILE IS NO LONGER USED (integrated into INI file)
- 3 / At initial start, it suggests you create the INI file. If an old DAT file exists, INI file will be updated with your drive list.
- 4 / At attach time, cd status is checked. A message requires an action if audio or data CD :
 - a/ isn't empty
 - b/ is sealed or was written by another product like something starting with "easy CD ... "
 - c/ number of sessions on the CD is given
- 5 / Unseal and CD erase options are now available
- 6 / Defining INI parameters has changed
- 7 / You can add under INI parameters another program which can be launched automatically at CDRWSEL start or through Run button.
(check [enable] button for launch at CDRWSEL start)
e.g. CDWCTL.EXE ("CDWriter control program" from RSJ)
- 8 / You can choose 4 kinds of App Windows ('bar' the small one; 'Windows', a new one; 'V1 window' the "original" design; and the 'J window' which give the most available direct options access...
- 9 / Added support for external language file
- 10/ Changed RSJ detection
- 11/ App Windows fonts can be changed
- 12/ App windows can be moved on the desktop and position is saved
- 13/ Last drive used + driveletter can be saved at close time
- 14/ CDRWSEL can now start RSJ daemon for you
- 15/ Made several visual changes to have a better look
- 16/ Parameter -i is now the default
- 17/ New parameter can be specified at second position : -q for quiet
- 18/ New parameter can be specified at fourth position : -t (Task list)
- 19/ Improved spin button slowdown
- 20/ Corrected bugs

WELCOME TO GUI CDRWSEL

* New under V2.0.1

- > corrected a few errors left under V2.0.0
 - Checking installed rsj could fail if config.sys exists under cmlib (communication manager)
 - Save of new drive list could fail
 - one more bug corrected
- > Activated internal function to use French language
- > changed a few comments under several windows

* New V2.0.0

- > AUTO is replaced by New Drive List
- > New Drive List is run at missing cdrwsel.dat file detection
- > Program detects if RSJ is installed or not (CDWFSD.EXE)
- > Corrected a stupid error under V1.6.0 (did an unwanted proc remove)

* For preview releases, read the cdrwsel.doc file ...

WELCOME TO GUI CDRWSEL

A / Author comments :

THE SOFTWARE IS PROVIDED "AS IS" AND WITHOUT ANY EXPRESS OR IMPLIED WARRANTIES. THE ENTIRE RISK AS TO THE QUALITY AND PERFORMANCE OF THE PROGRAM IS WITH YOU. SHOULD THE PROGRAM PROVE DEFECTIVE, YOU ASSUME THE COST OF ALL NECESSARY SERVICING, REPAIR OR CORRECTION.

Was virus free (Norman scan) under my system on 01/21/2004 (MM/DD/YYYY)

YES , IT IS FREeware :-)

(c) Remy Dodin

PS: I'm Scanning RSJ news site regularly !
mailto: remy.dodin@libertysurf.fr