

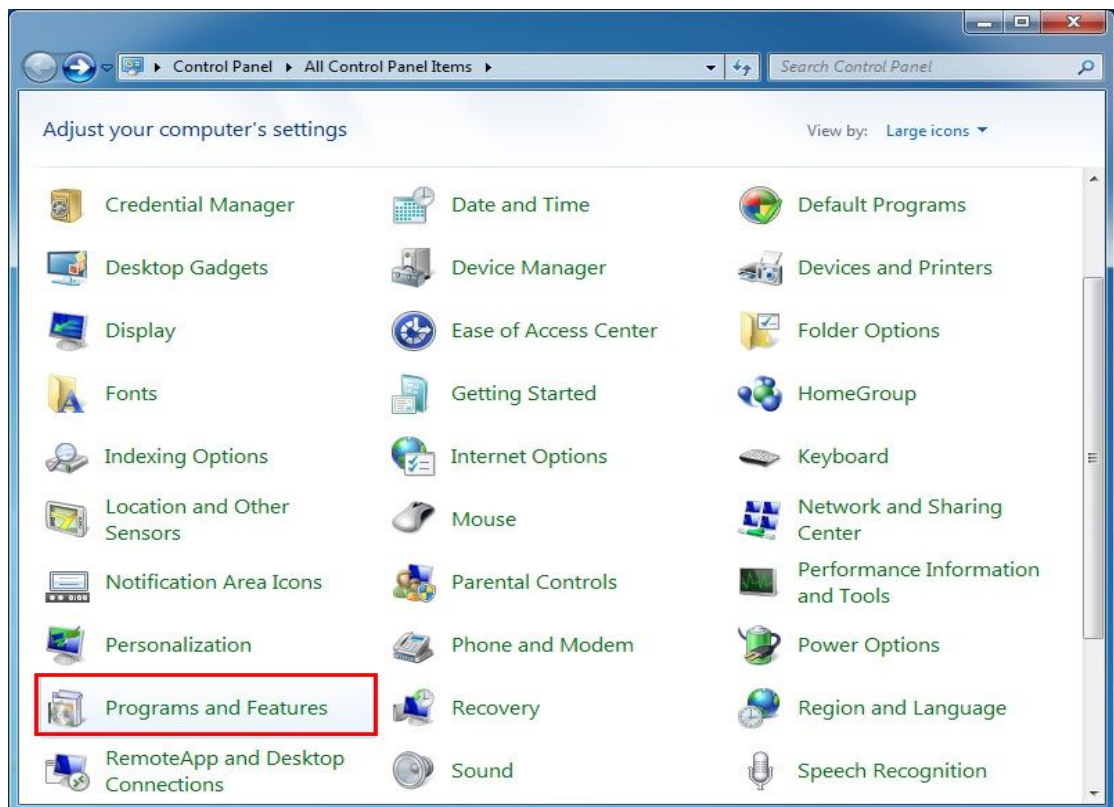
D-Link SNMP Agent

User Manual

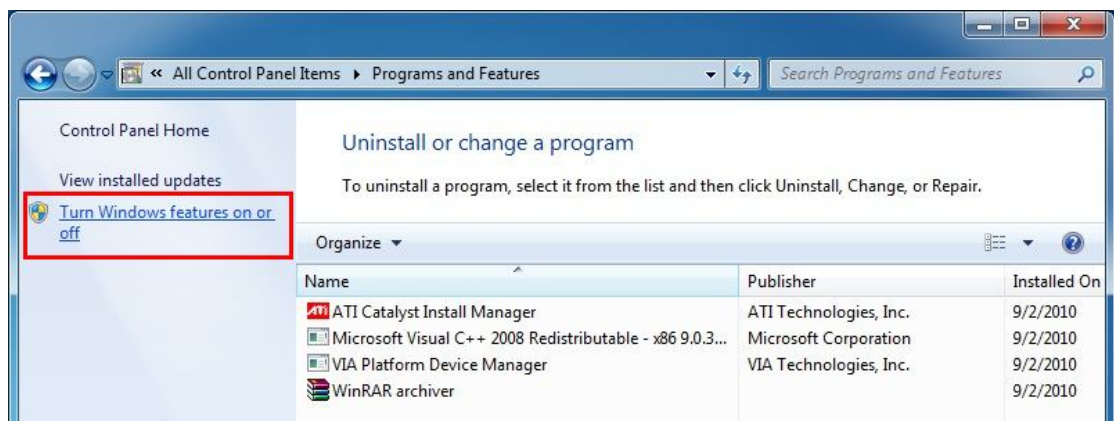
v1.00

1 Install Windows 7 SNMP Service

1. Open the Control Panel in the Start menu.
2. Open **Programs and Features** in the Control Panel.

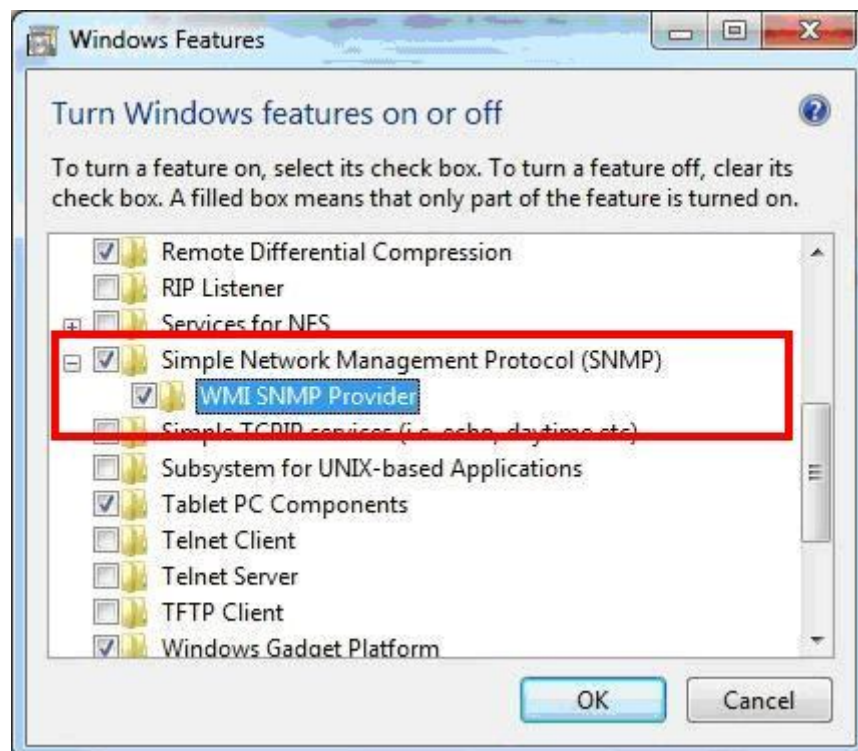


3. Click **Turn Windows features on or off** in the left of Programs and Features window.



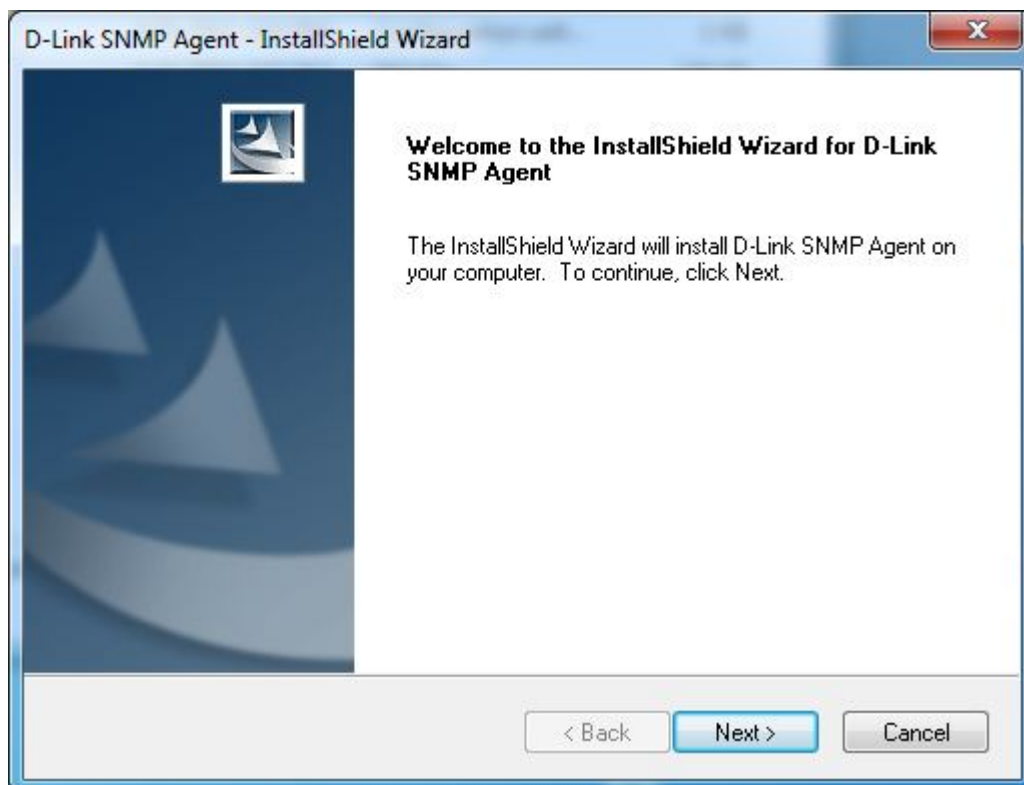
4. Select **Simple Network Management Protocol (SNMP)** and **WMI**

SNMP Provider, and then click OK.

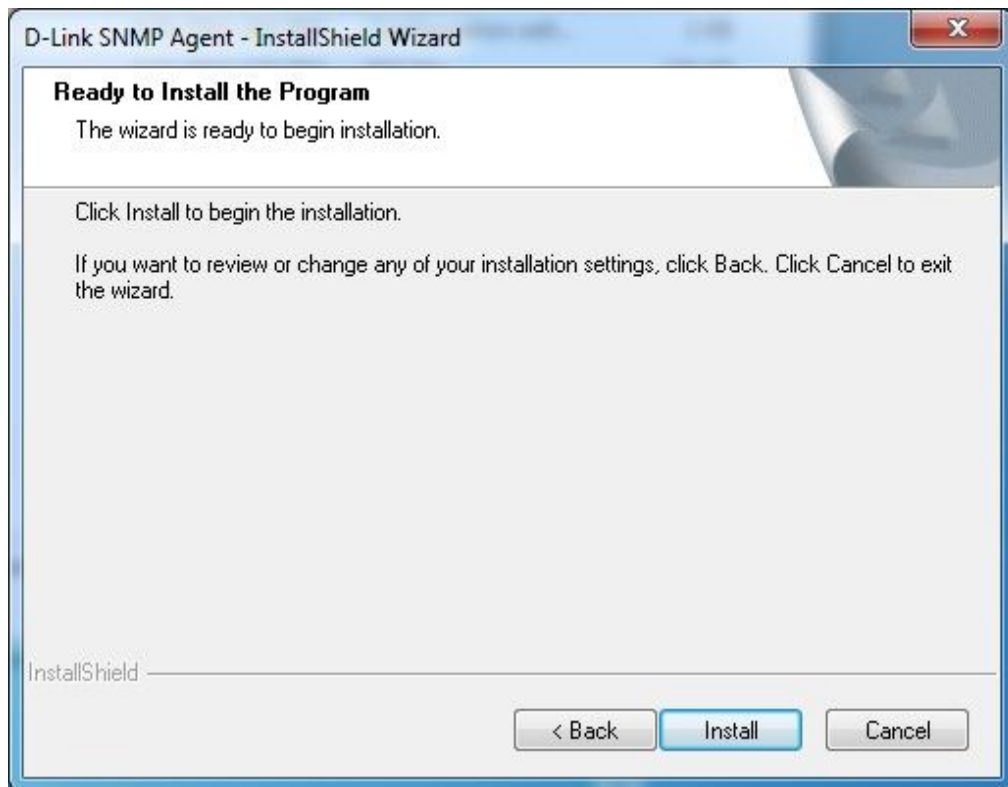


2 Install the SNMP Agent

1. Click **Next** to continue with the installation.



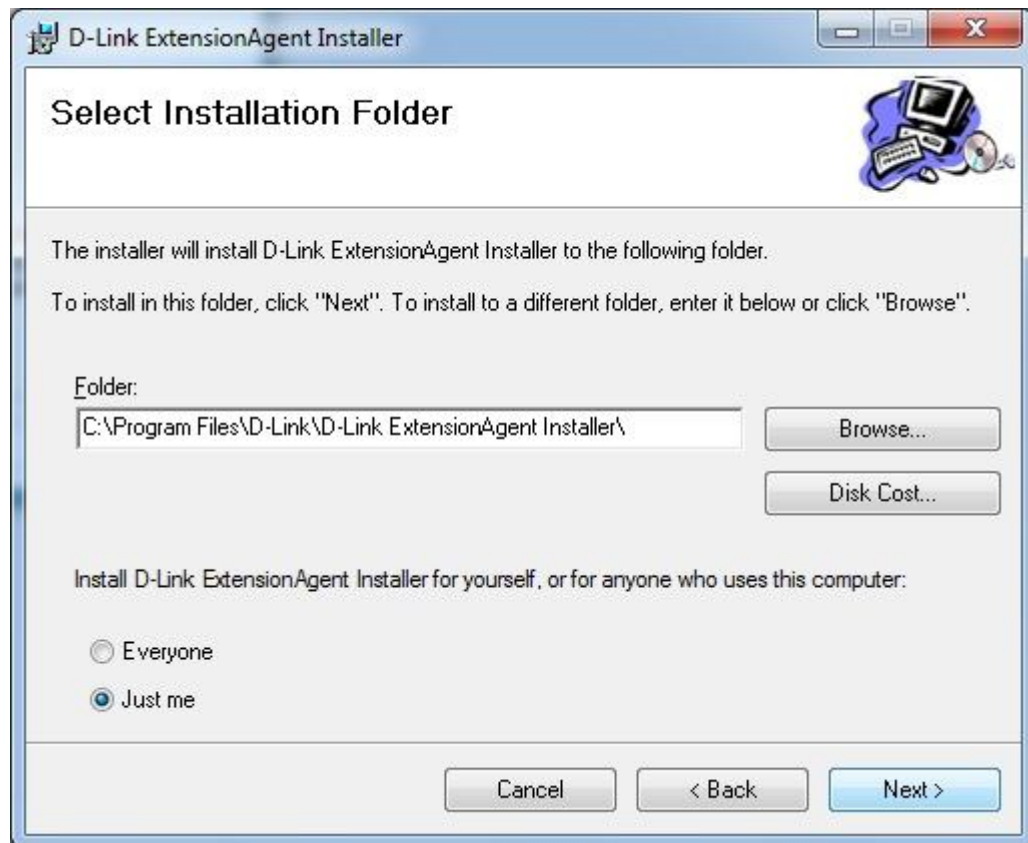
2. Click **Install** to continue with the installation



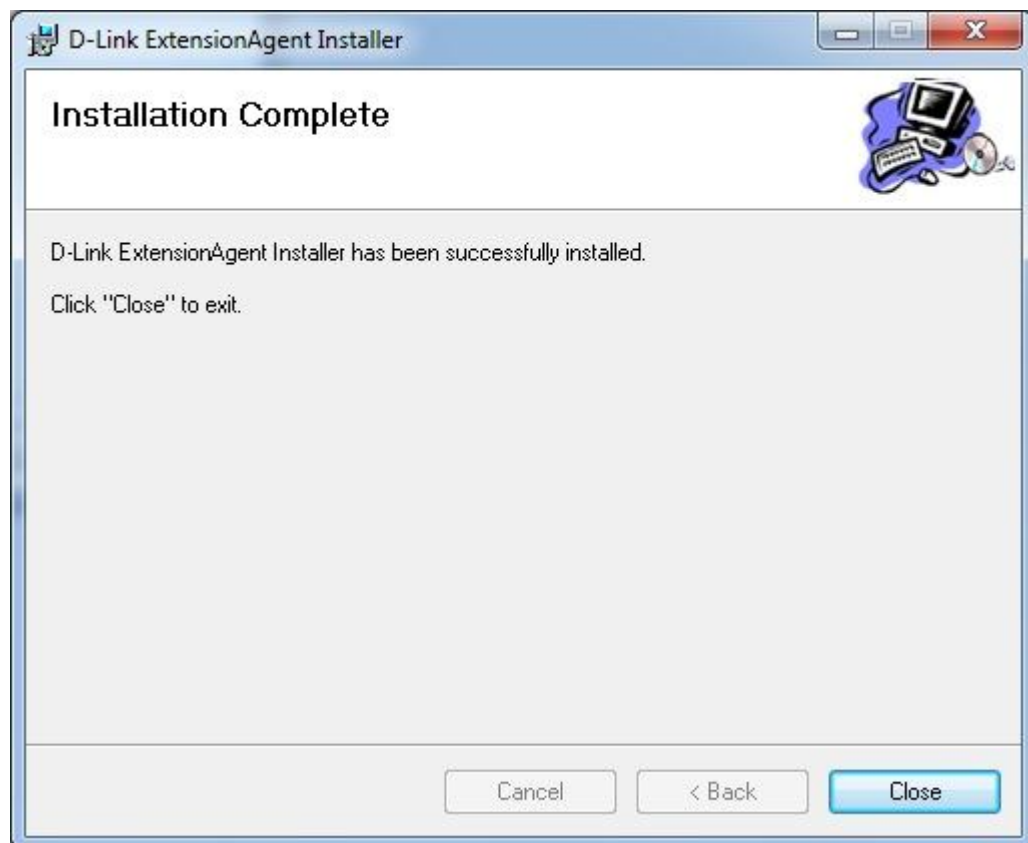
3. Install D-Link Extension Agent and click **Next** to continue with the installation



4. Click **Next** to continue the installation.

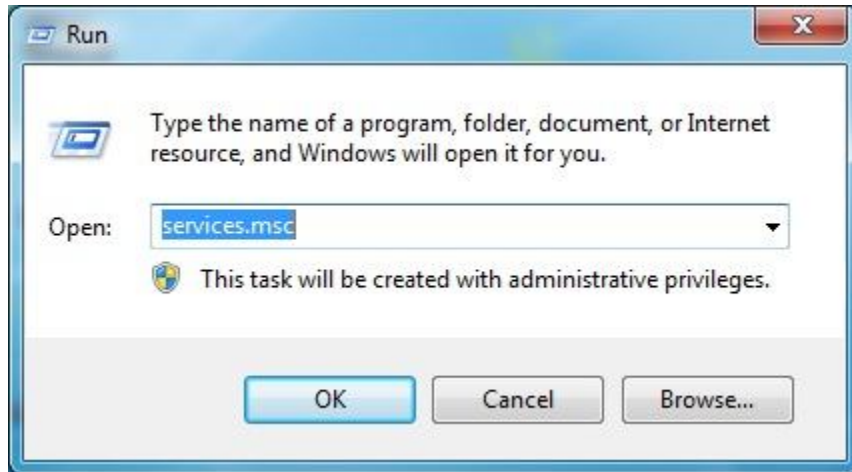


5. Installation completes.



3 Open and Setup SNMP Service

1. Open **Run** in the Start menu.
2. Type **services.msc** and click OK.



3. Select SNMP service and double click it.

SNMP Service

Stop the service

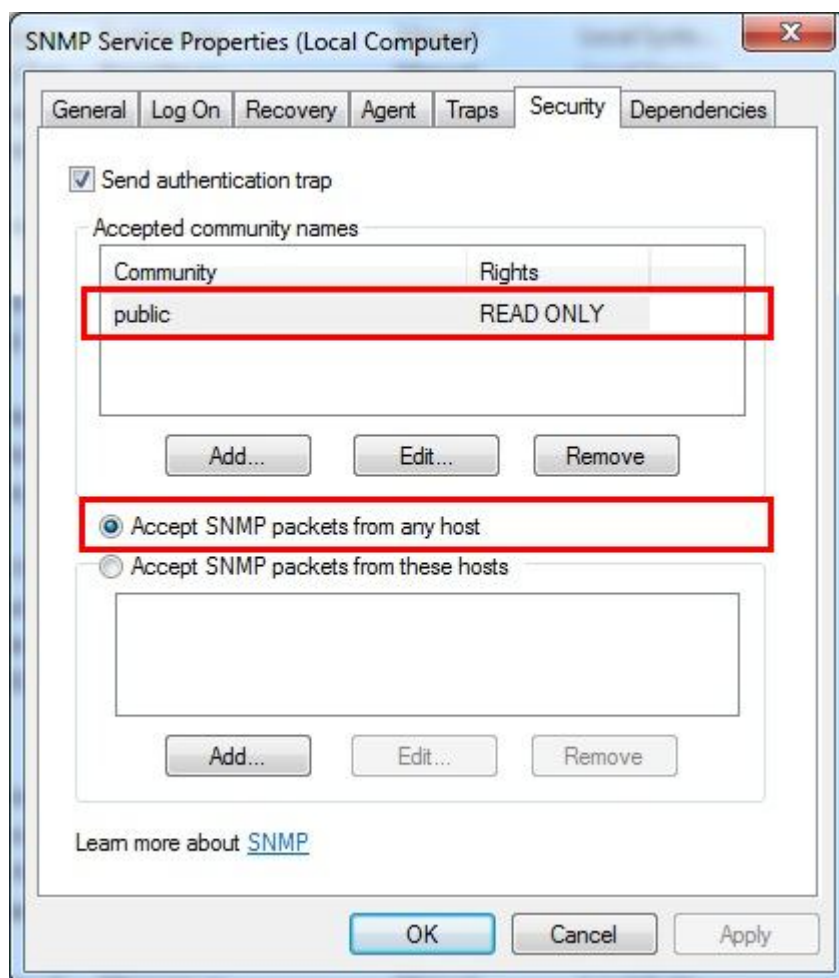
Restart the service

Description:

Enables Simple Network Management Protocol (SNMP) requests to be processed by this computer. If this service is stopped, the computer will be unable to process SNMP requests. If this service is disabled, any services that explicitly depend on it will fail to start.

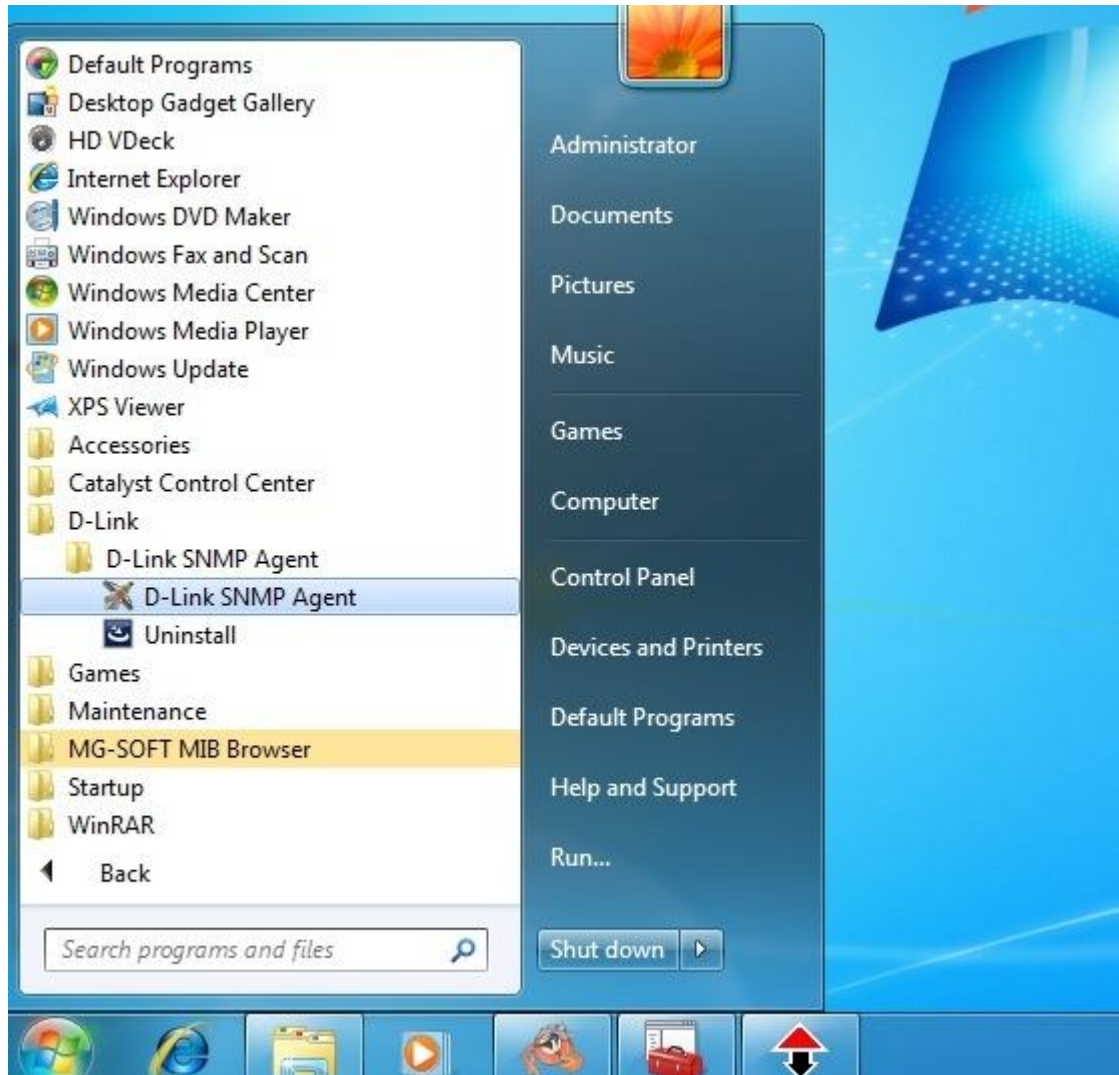
Name	Description	Status	Startup Type	Log On As
Remote Desktop S...	Allows the r...		Manual	Local Syste...
Remote Procedur...	The RPCSS ...	Started	Automatic	Network S...
Remote Procedur...	In Windows...		Manual	Network S...
Remote Registry	Enables rem...		Manual	Local Service
Routing and Rem...	Offers routi...		Disabled	Local Syste...
RPC Endpoint Ma...	Resolves RP...	Started	Automatic	Network S...
Secondary Logon	Enables star...		Manual	Local Syste...
Secure Socket Tun...	Provides su...		Manual	Local Service
Security Accounts...	The startup ...	Started	Automatic	Local Syste...
Security Center	The WSCSV...	Started	Automatic (D...	Local Service
Server	Supports fil...	Started	Automatic	Local Syste...
Shell Hardware De...	Provides no...	Started	Automatic	Local Syste...
Smart Card	Manages ac...		Manual	Local Service
Smart Card Remo...	Allows the s...		Manual	Local Syste...
SNMP Service	Enables Sim...	Started	Automatic	Local Syste...
SNMP Trap	Receives tra...	Started	Manual	Local Service
Software Protection	Enables the ...		Automatic (D...	Network S...
SPP Notification S...	Provides So...		Manual	Local Service
SSDP Discovery	Discovers n...	Started	Manual	Local Service
Superfetch	Maintains a...	Started	Automatic	Local Syste...
System Event Noti...	Monitors sy...	Started	Automatic	Local Syste...
Tablet PC Input Se...	Enables Tab...		Manual	Local Syste...

4. Click **Security**. Add community name "**Public**" with "**READ ONLY**".
5. Select **Accept SNMP packets from any host** and click **OK**

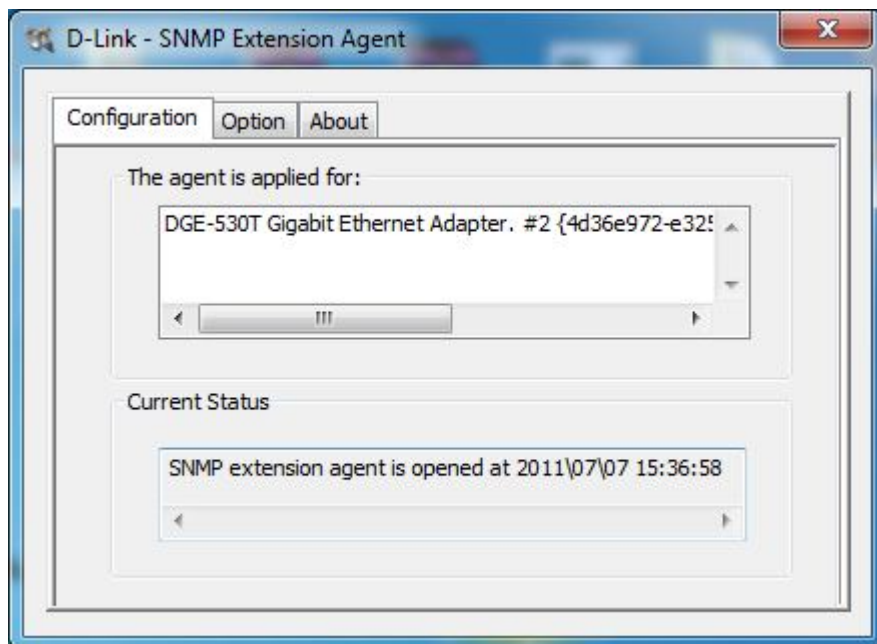


4 Using the SNMP Agent

1. The SNMP Agent will launch automatically after it has been installed. It also can be found from the Start menu



2. In **Configuration** page, all adapters that support SNMP are listed on this. The adapters on the list can access SNMP service. **Current Status** will show the time when this extension agent starts working.

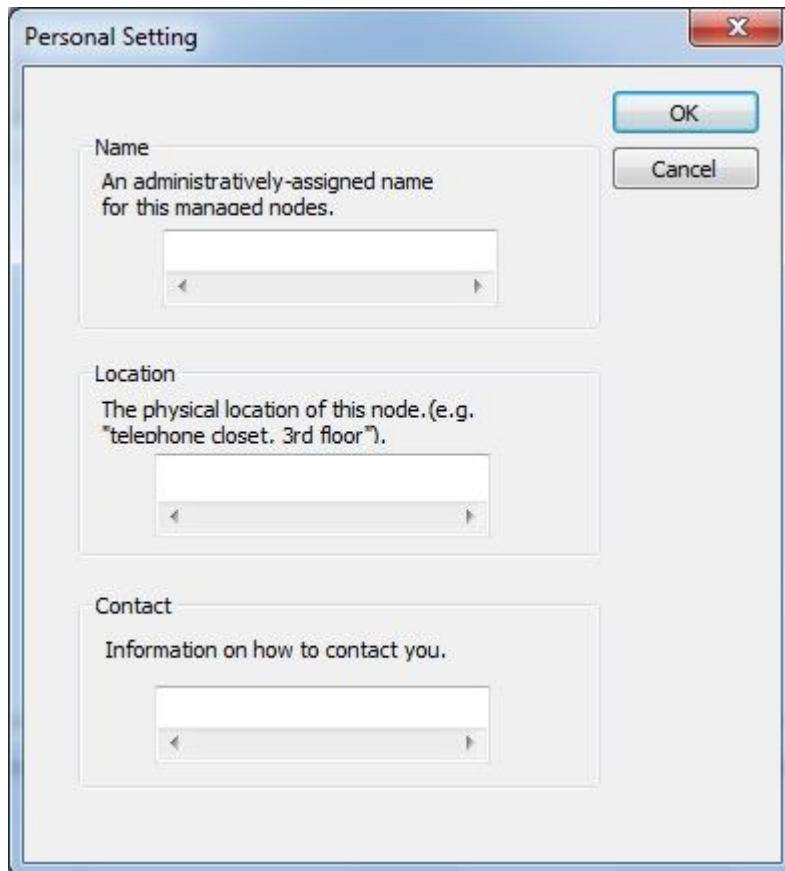


3. To automatically launch the SNMP Agent at Windows start up, select **Auto launch when Windows start up**. If this option is not selected, the SNMP Agent can be launched manually.



4. Press **Personal** and then open personal setting menu configure Name, Location and Contact information. Personal Setting information is

shared with SNMP capable devices on the network. Please enter your information into the blanks and click OK to save the changes.



The 'Personal Setting' dialog box is shown with a title bar containing a close button (X). It contains three sections, each with a label, a description, and a text input field:

- Name**: An administratively-assigned name for this managed nodes. Below the text is a text input field.
- Location**: The physical location of this node. (e.g. "telephone closet, 3rd floor"). Below the text is a text input field.
- Contact**: Information on how to contact you. Below the text is a text input field.

On the right side of the dialog, there are two buttons: 'OK' and 'Cancel'.

5. To change the administrative password, click the **Password** button. If the default password exists, input the default password to verify authentication in **Input Password** menu first. Then input your new password and confirm it again in **Password Setting** menu.



The 'Password Setting' dialog box is shown, overlaid on a larger window titled 'D-Link - SNMP Extension Agent'. The 'Password Setting' dialog has a title bar with a close button (X). It contains two text input fields:

- Please input new password**: A text input field.
- Confirm new password:**: A text input field.

At the bottom of the dialog, there are two buttons: 'Save' and 'Cancel'.