

Contents of Package:

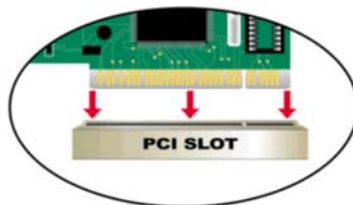
DFE-528TX Fast Ethernet Adapter
Quick Install Guide
CD-ROM, which includes driver software

If any of the above items are missing, please contact your reseller.

**TURN OFF the computer and
unplug the power cord.**

1

Installing the DFE-528TX into the computer's PCI slot



Note: To avoid static electric charges, please touch an unpainted screw on the outside of the power supply before installing or working with the DFE-528TX.

- **Turn off** your computer and **unplug** the power cord.
- **Remove** the back cover of your computer. (Refer to your computer's manual if needed.)
- **Locate** an available PCI slot. PCI slots are usually white or cream colored.
- **Remove** the backplate (the small piece of metal that covers the opening for the PCI card on the back cover that you just removed.)
- **Insert** the DFE-528TX carefully and firmly into the PCI slot.
- **Secure** the DFE-528TX with the screw from the backplate.
- **Replace** your computer's cover.

2

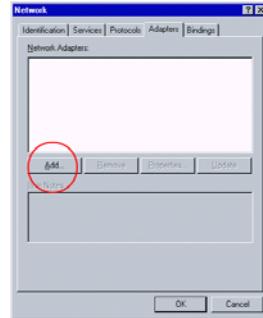
Installing the Drivers

- TURN ON the computer.
- Go to **Settings>Control Panel>Network**

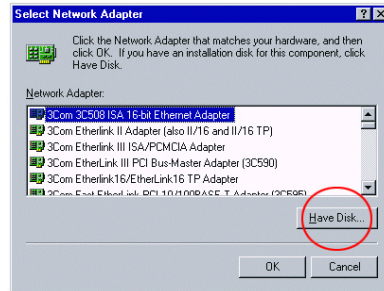


Double-click on the **Network** icon.

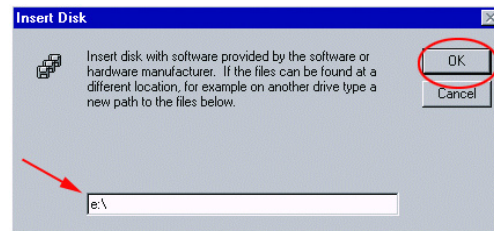
At the “**Network**” window, click on the “**Adapters**” tab.



Click “**Add**”

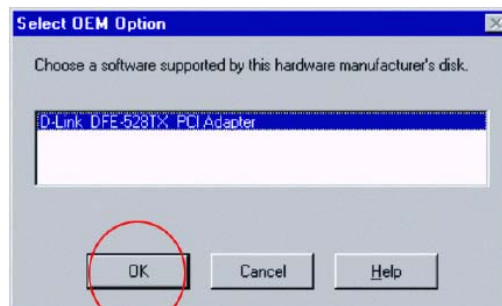


Click on “**Have Disk**”

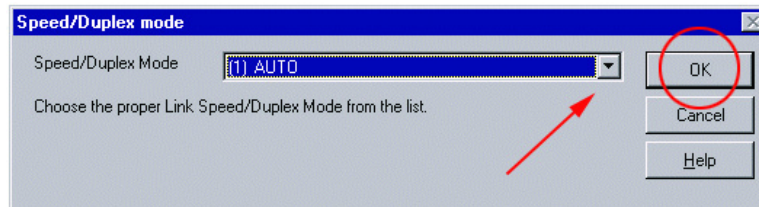


Type in the **CD-ROM** drive letter.

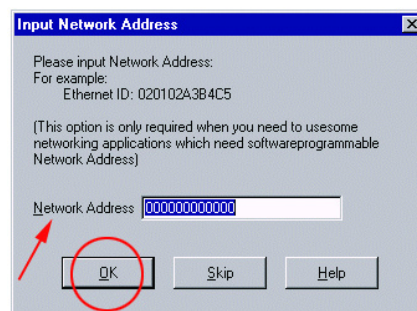
Click **OK**



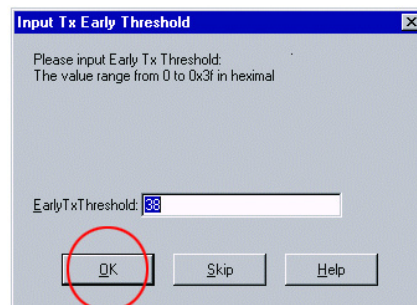
Click OK



Click “OK” to accept the “Auto” speed mode. To choose a fixed speed mode, make a selection from the “Speed/Duplex Mode” pull-down menu.



Click “OK” if you are not using IPX networking.
(Type the IPX network number into the “Network Address” field, if you are using IPX networking.)

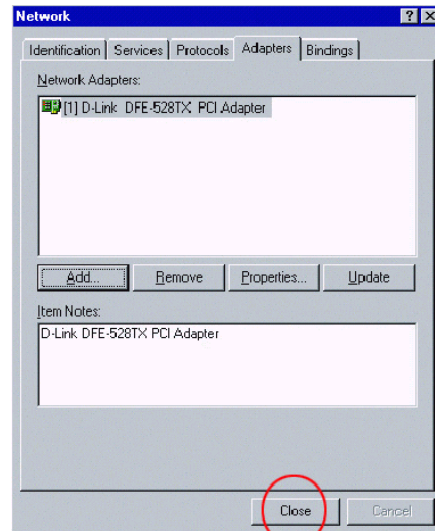


Click “OK” to accept default setting.

3

Checking the Installation

Go to Start>Settings>Control Panel
Double-click on the Network icon.
Under “**Adapters**,” check to see that the
“**D-Link DFE-528TX PCI Adapter**” is displayed.



Click “Close.” The installation is complete.

CONTACTING TECHNICAL SUPPORT

You can find the most recent software and user documentation on the **D-Link** website.

D-Link provides free technical support for customers within the United States for the duration of the warranty period on this product.

U.S. customers can contact **D-Link** technical support through our web site, e-mail, or by phone.

United States technical support is available Monday through Friday from 6:00 a.m. to 6:00 p.m. (PST.)

Web: <http://www.dlink.com>

Email: support@dlink.com

Phone: 949-788-0805 (option #4)

*If you are a customer residing outside of the United States, please refer to the list of **D-Link** locations that is included in the User's manual.*